

借鏡美國經驗對
臺灣校務研究發展的啟發：

校務績效報告與校際數據交換聯盟

傅遠智

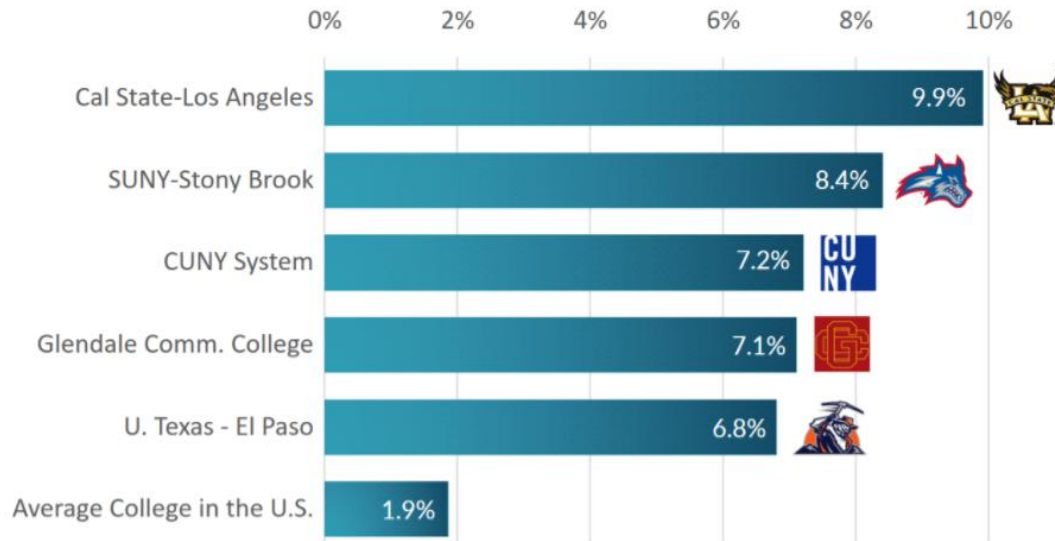
賓州州立大學高等教育博士

How can we improve economic opportunities for our children?

We use big data to identify new pathways to upward mobility.

Highest Upward Mobility Rate Colleges

Percent of students who come from families in bottom fifth and reach top fifth of income distribution



[Click here](#) for data on mobility rates for all colleges.



Raj Chetty

Senior Fellow
Stanford Institute for Economic Policy Research (SIEPR)

Professor
Department of Economics

[View CV](#)

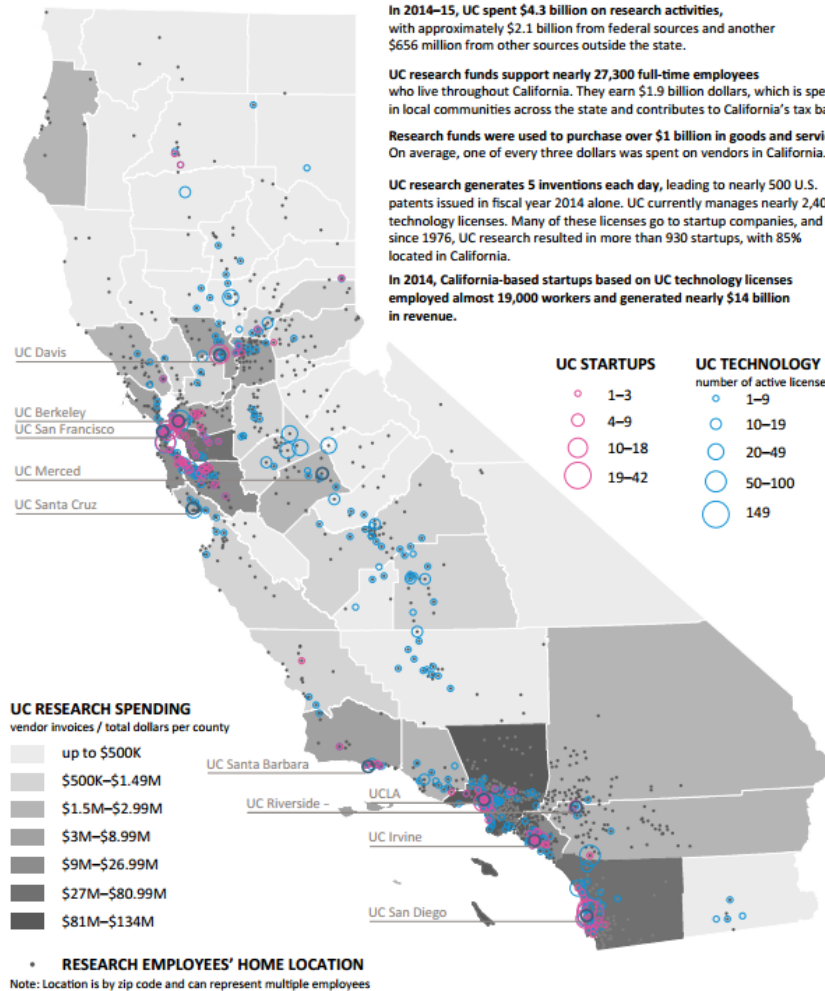
[Personal Website](#)

PhD, Department of Economics, Harvard University, 2003
BA, Economics, Harvard College, 2000
Valedictorian, University School of Milwaukee 1997

We use data on 30 million college students to construct mobility report cards – publicly available statistics on students’ earnings and their parents’ incomes – for each college in America. Our analysis sheds light on how colleges shape children’s prospects of upward mobility and how we can help more children climb the income ladder through higher education.



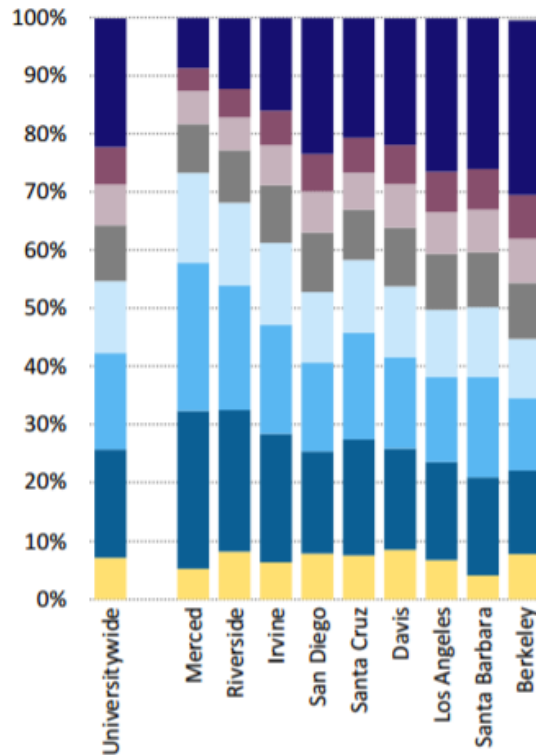
UC RESEARCH IMPACTS IN CALIFORNIA



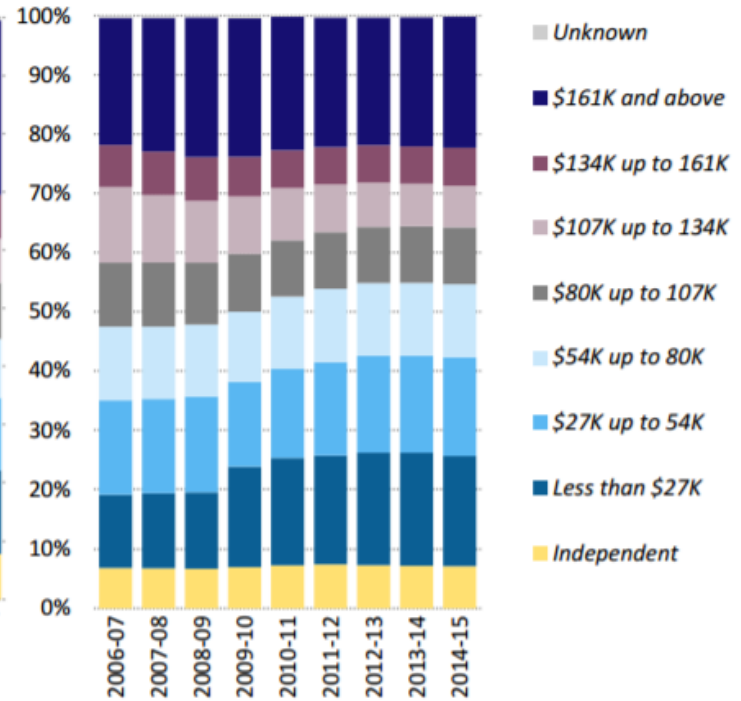


A large proportion of UC students come from low-income families, especially at UC's newer campuses.

2.2.2 Undergraduate income distribution Universitywide and UC campuses 2014-15



2.2.3 Trends in the parent income of UC undergraduates, 2013 constant dollars Universitywide 2005-06 to 2014-15





For very low-income students, the comparatively high cost of attendance at UC campuses is offset by the higher-than-average amounts of gift aid they receive. This enables UC to attract, support and graduate a sizable proportion of high-achieving students from low-income families.

2.3.2 Average gift aid, cost of attendance and net cost for very low-income students UC campuses and public AAU institutions 2013–14

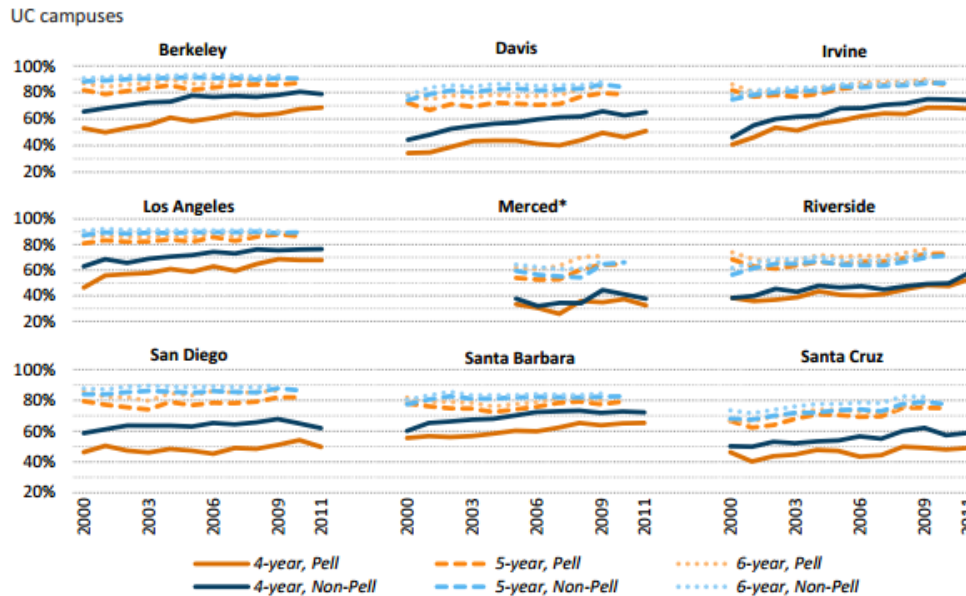
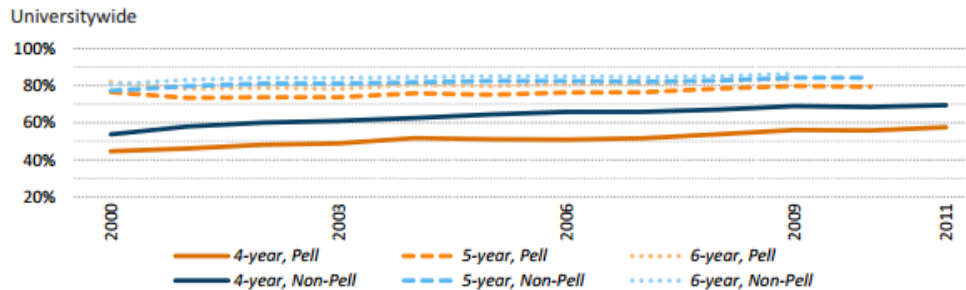
Percentage shown is the percentage of full-time, first-time freshmen whose families have incomes below \$30,000.

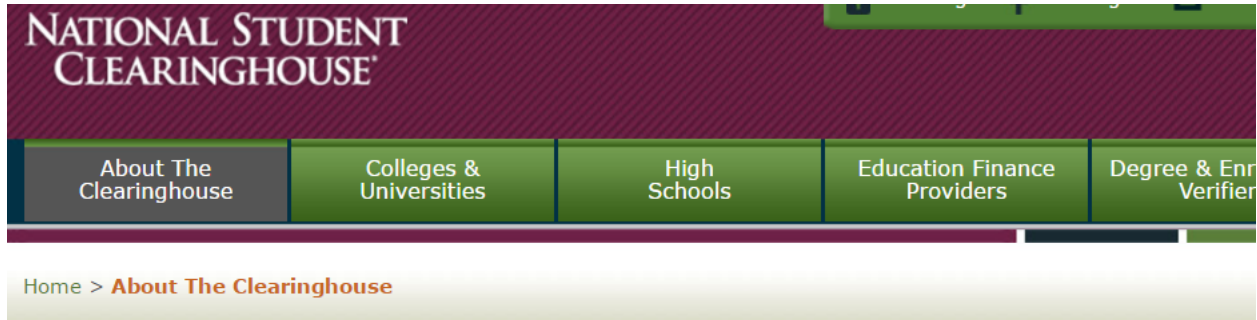




Four-year graduation rates among freshman Pell Grant recipients have increased by 13 percentage points since the entering cohort of fall 2000.

3.1.6 Freshman graduation rates by Pell Grant receipt status
Cohorts entering fall 2000 to 2011





NATIONAL STUDENT CLEARINGHOUSE

About The Clearinghouse | Colleges & Universities | High Schools | Education Finance Providers | Degree & Enrollment Verifier

Home > [About The Clearinghouse](#)

Who We Are >

What We Do

Who We Work With

Our History

Partners

Clearinghouse Facts

Privacy Commitment

Leadership

Media Center

Blog

Careers

Contact Us

Who We Are

Founded in 1993 by the higher education community, the **National Student Clearinghouse**[®] relieves the administrative burdens and costs related to student data reporting and exchange.

We are a nonprofit and nongovernmental organization and the **leading provider of educational reporting, data exchange, verification, and research services**. **The services we offer have been provided at the request of our participating institutions to enable them to better serve their students.** Our work — performed in a trusted, secure and private environment — provides numerous time- and cost-saving benefits to students, schools, administrators, and requestors.

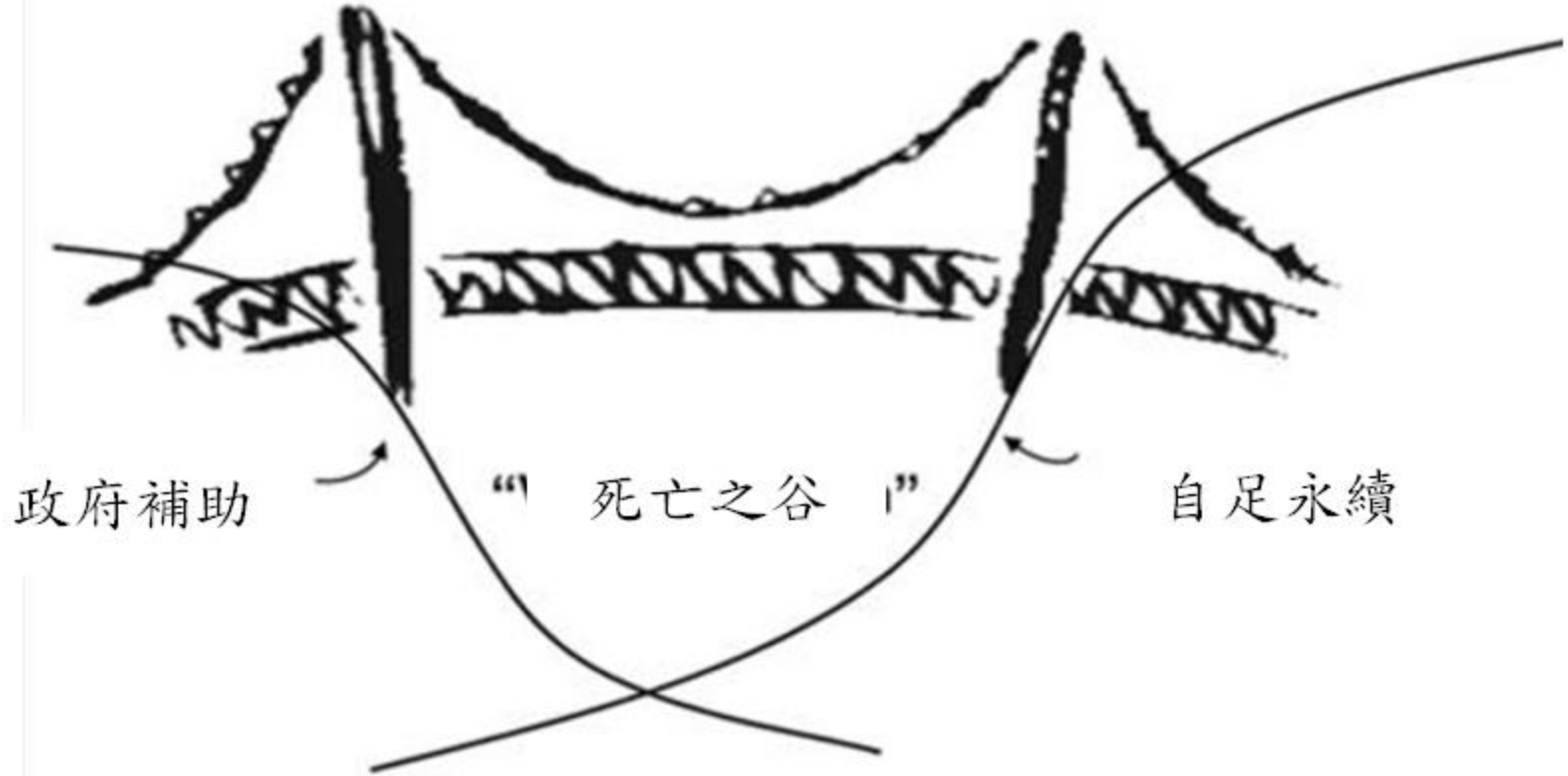
- More than 3,600 colleges and universities participate in the Clearinghouse, reporting enrollment and degree information to us regularly throughout the year
- Participants enroll 98% of all students in public and private U.S. institutions
- Our free and low-cost services save higher education institutions over \$750 million annually

Through our research arm, the National Student Clearinghouse[®] Research Center[™], a 501(c)(3) nonprofit organization, we provide educators and policymakers with accurate longitudinal data on student outcomes to enable informed decision making.

Clearinghouse services are designed to facilitate an institution's compliance with the Family Educational Rights and Privacy Act, The Higher Education Act, and other applicable laws.

- **專業社群的集體行動**
 - 與其被動的等數據，不如主動的要數據
 - 與其被動反應，不如主動出擊
- **校際數據交換協議**
 - 起草校際數據交換協議的合作框架
 - 學生學籍資料的交換
 - 教師工作條件調查(加總後)

給校務研究社群的行動建議



參考資料來源

- Chetty, R., Friedman, J. N., Saez, E., Turner, N., & Yagan, D. (2017). Mobility report cards: The role of colleges in intergenerational mobility. *The Equality of Opportunity Project*. Jan.
- University of California(2016). *Annual accountability report*. Oakland CA.
- National Student Clearinghouse
<http://www.studentclearinghouse.org/about/>